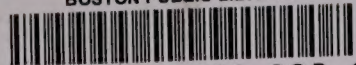


BOSTON PUBLIC LIBRARY



3 9999 08874 393 3

LA
CÉRAMIQUE ARCHAÏQUE
DE L'ISLAM
ET SES ORIGINES

PAR

MUUNCE CIZO
ANALYSE DU MUSÉE DU LOUVRE
ANCIEN MEMBRE DE L'ÉCOLE N. J. L.
CHARGÉ DE MISSION ARCHÉOLOGIQUE

PLANCHES

(TRICROMIE ED. BERT-GODDE, PHOTOTYPAGE HON. MAROTTE)

PARIS

ÉDITIONS ERNEST LEROUX

28, RUE BONAPARTE, 28

1920

349
1020

★
No. Cal. 80.180.9

Plates



★
No. Cal. 80.180.9

Plates



* Cab. 80.180.9

Plates



BOSTON
PUBLIC
LIBRARY

CAB. 80.180.9.



BOSTON
PUBLIC
LIBRARY



BOSTON
PUBLIC
LIBRARY





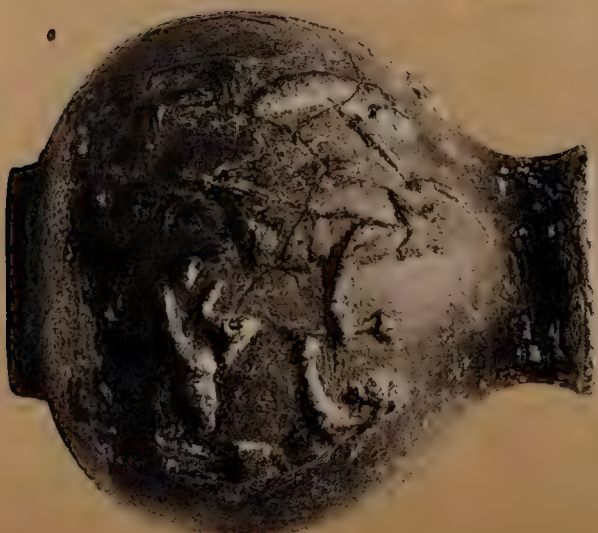
BRITISH MUSEUM
ANTHROPOLOGY



1915
15



CLB. 30 132. 2



CAB-20.130.9.



Small circular stamp or mark, possibly a library or collection identifier.





OSTER
1861
LIBRARY

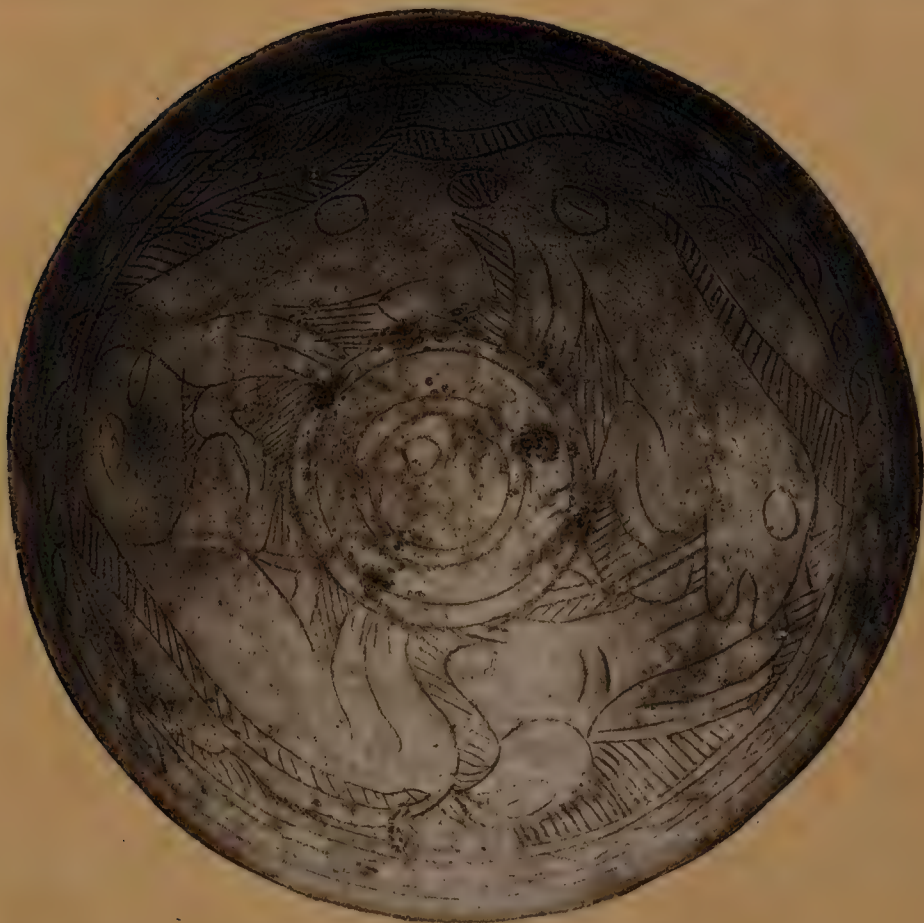


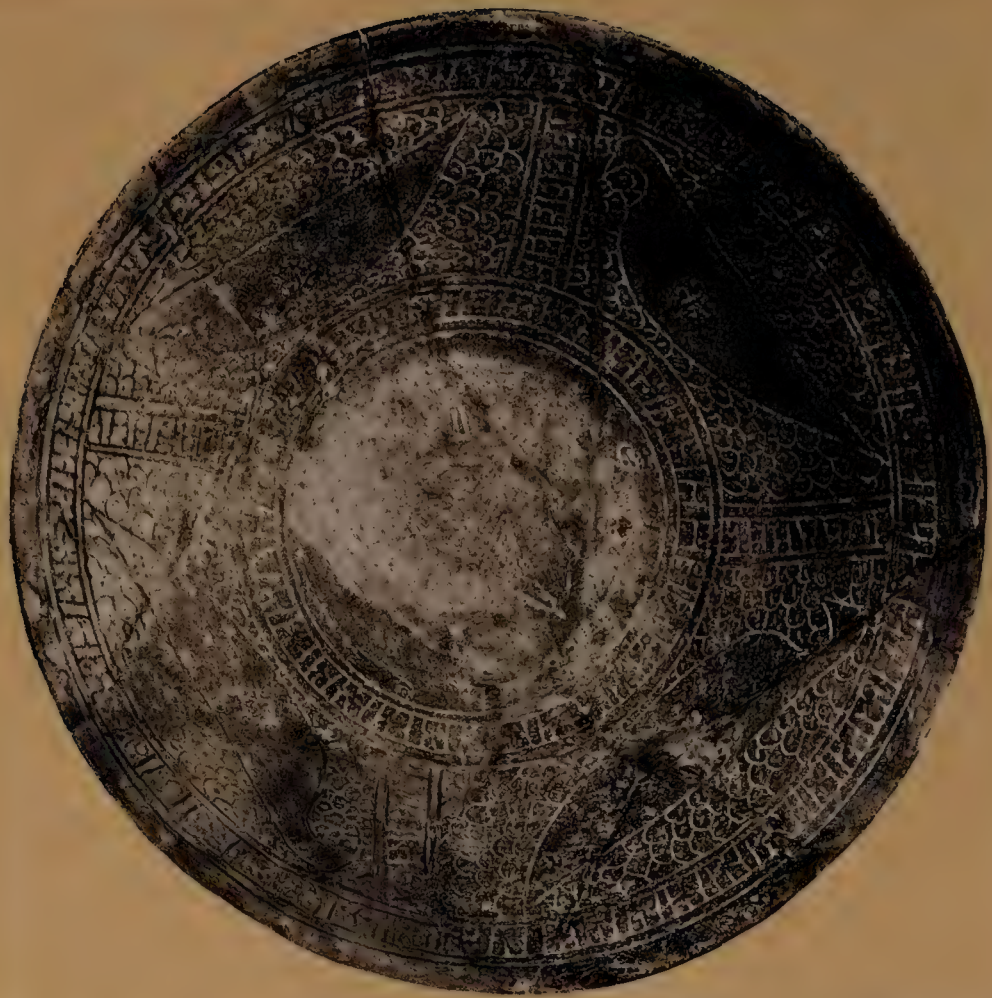




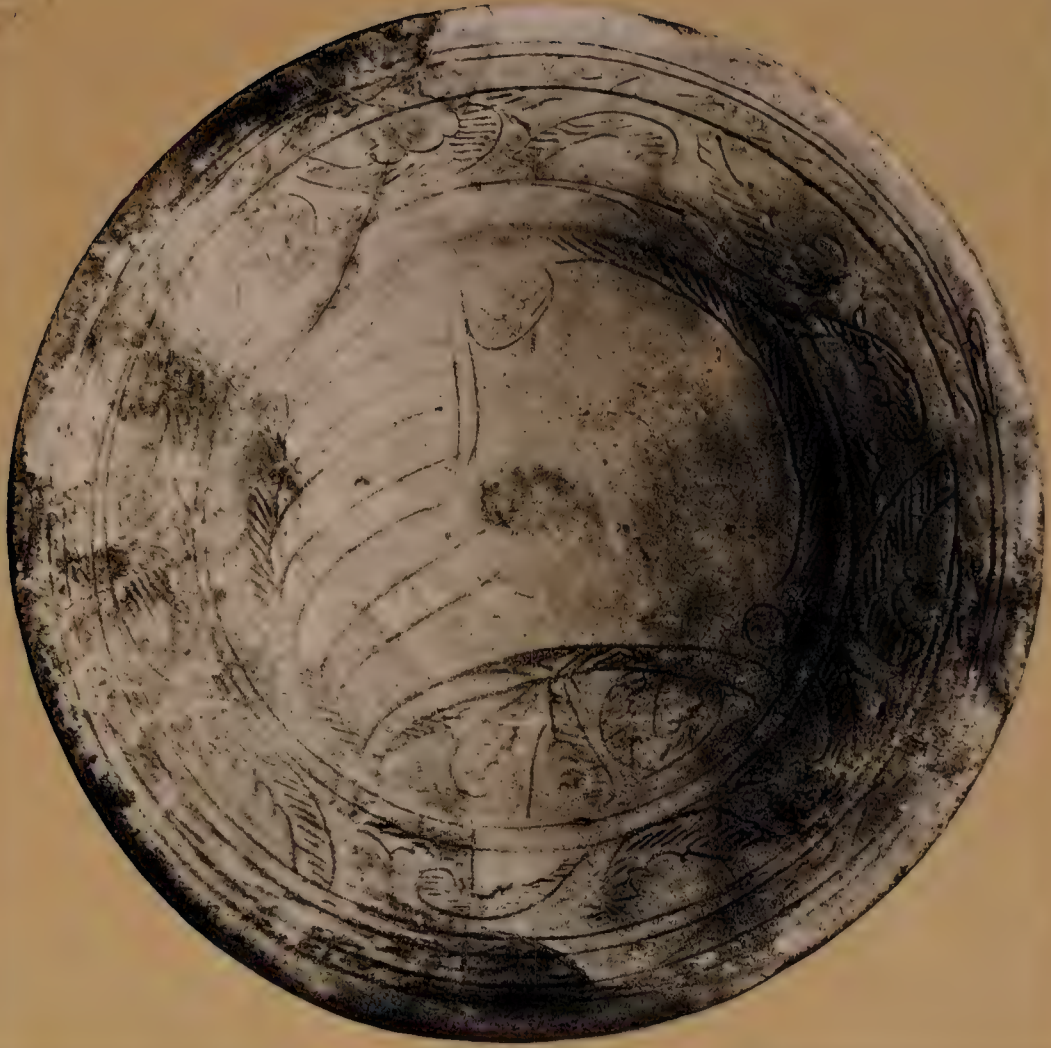


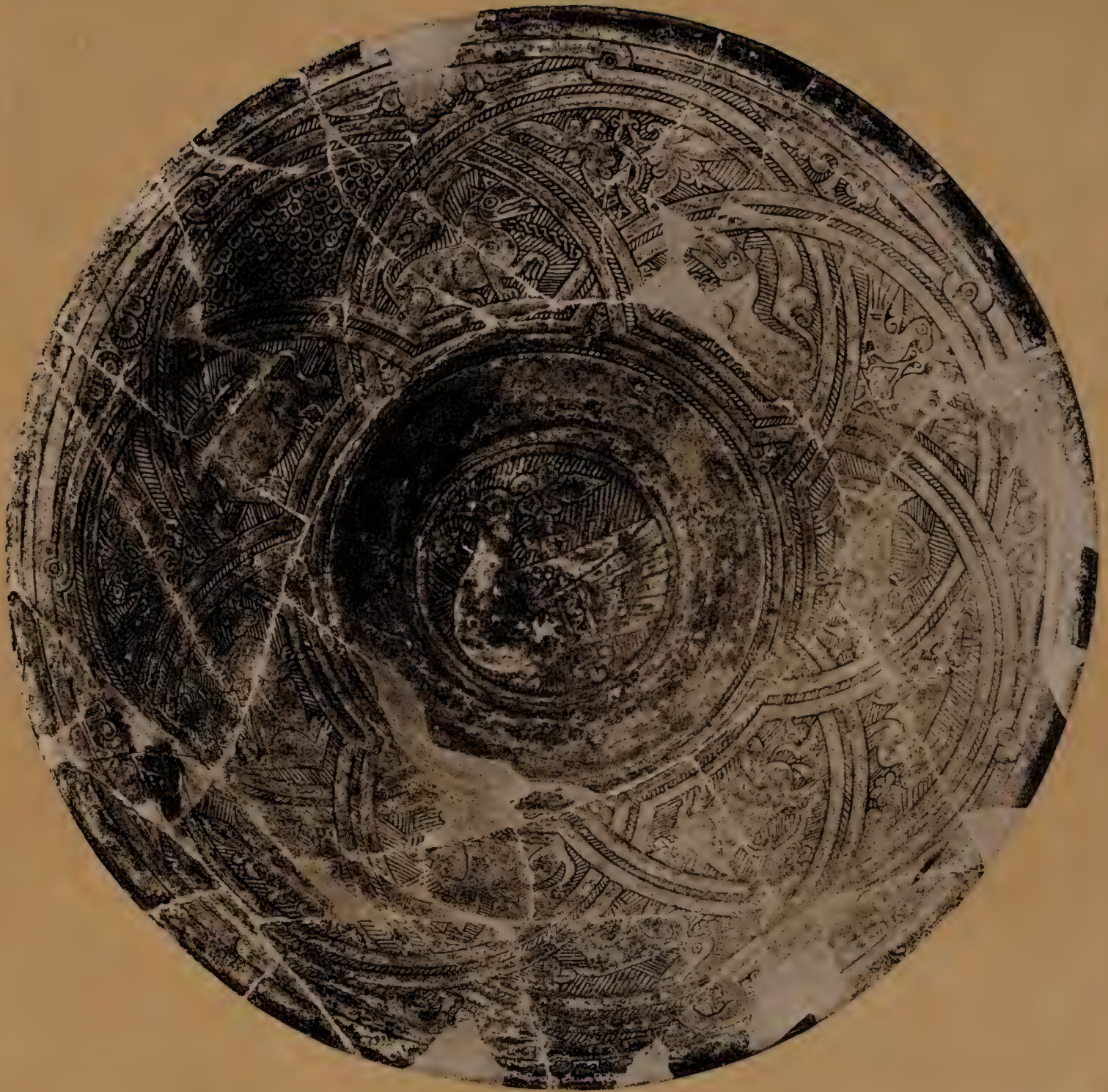
CHB. 30.130.9.





CL3.80.180.9.

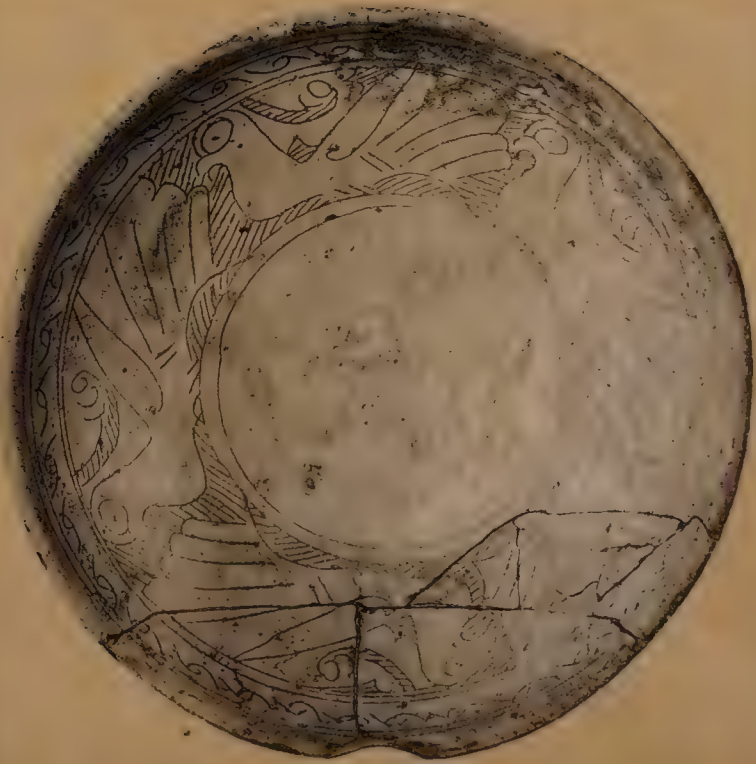


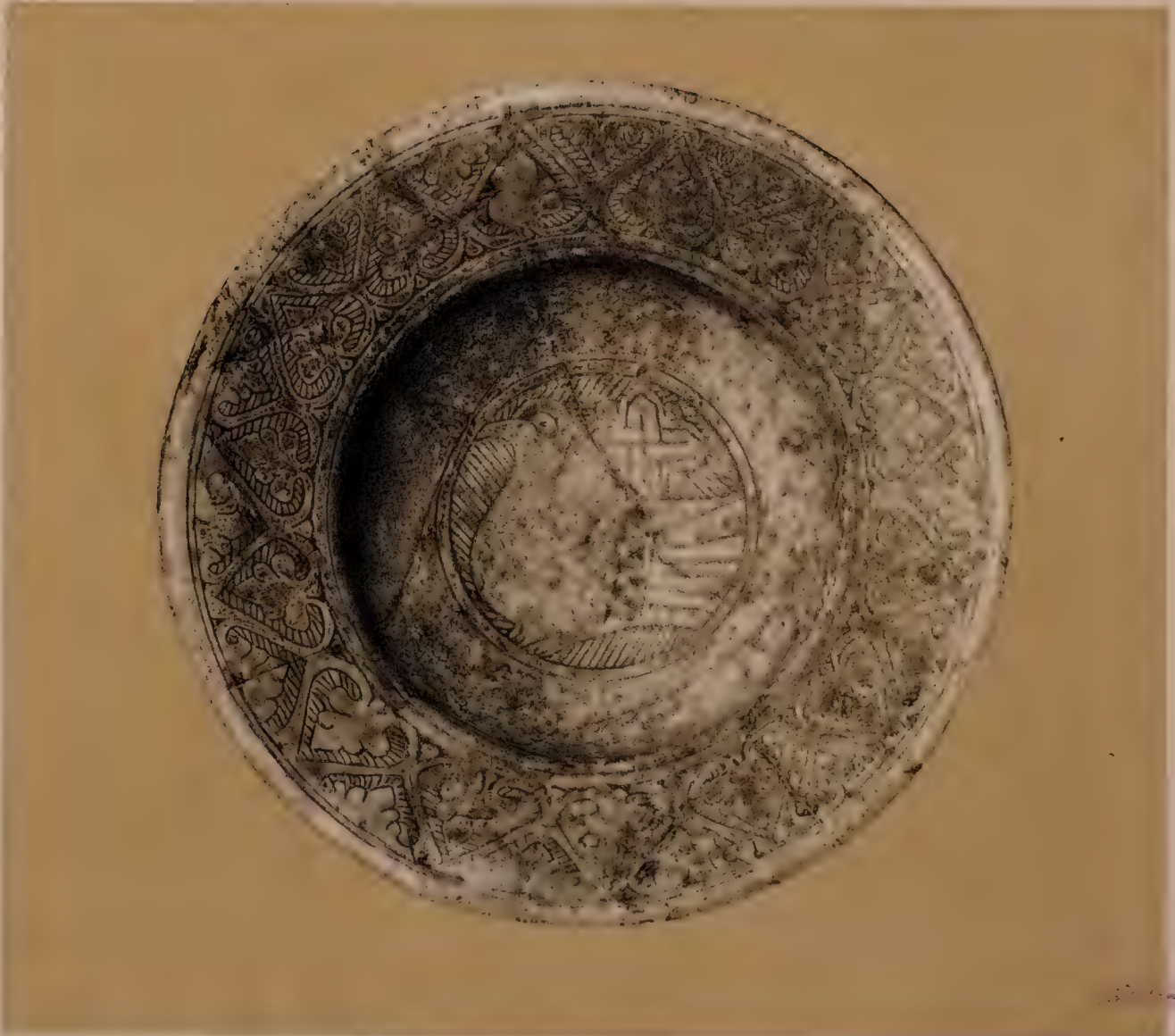










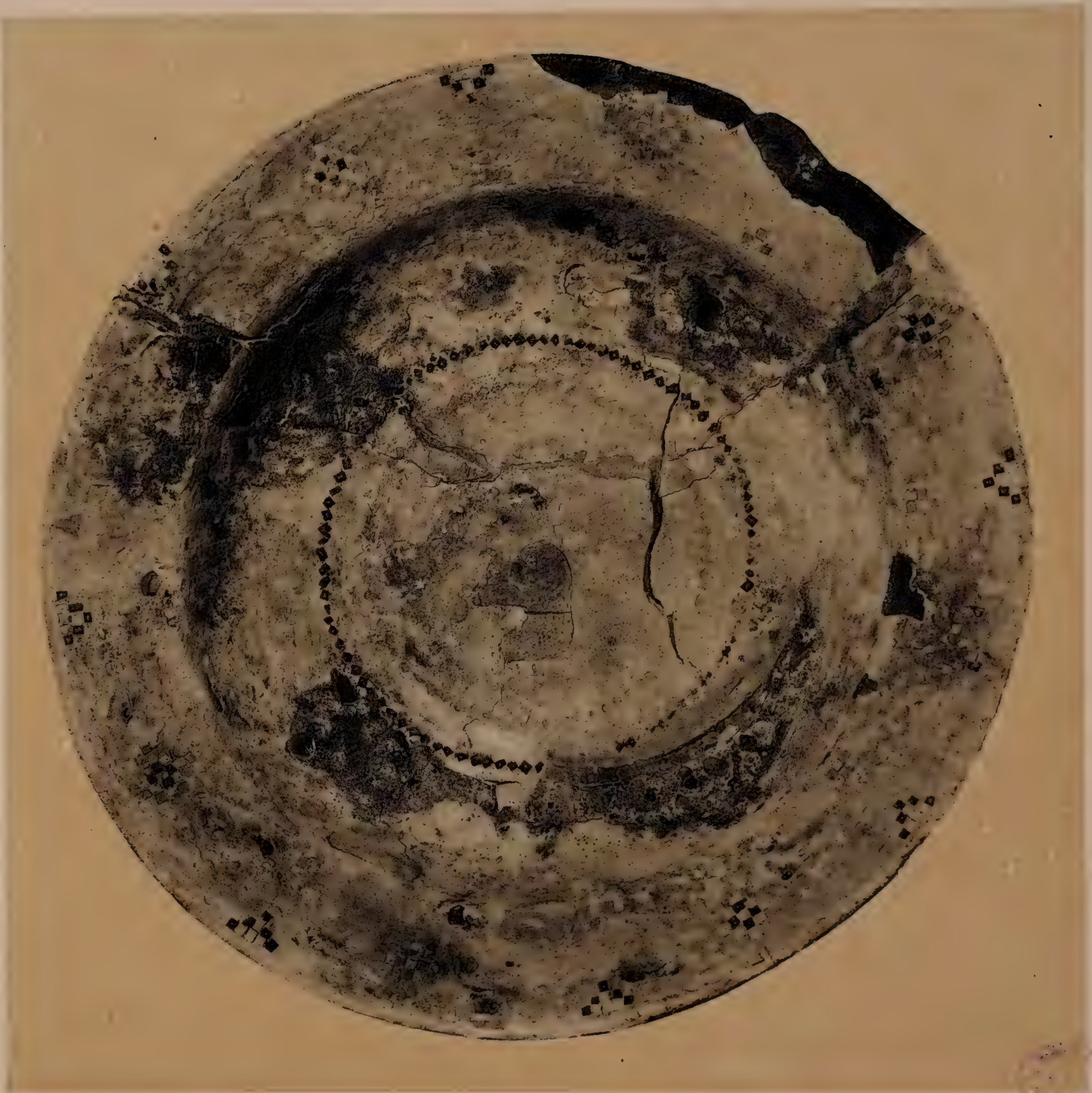


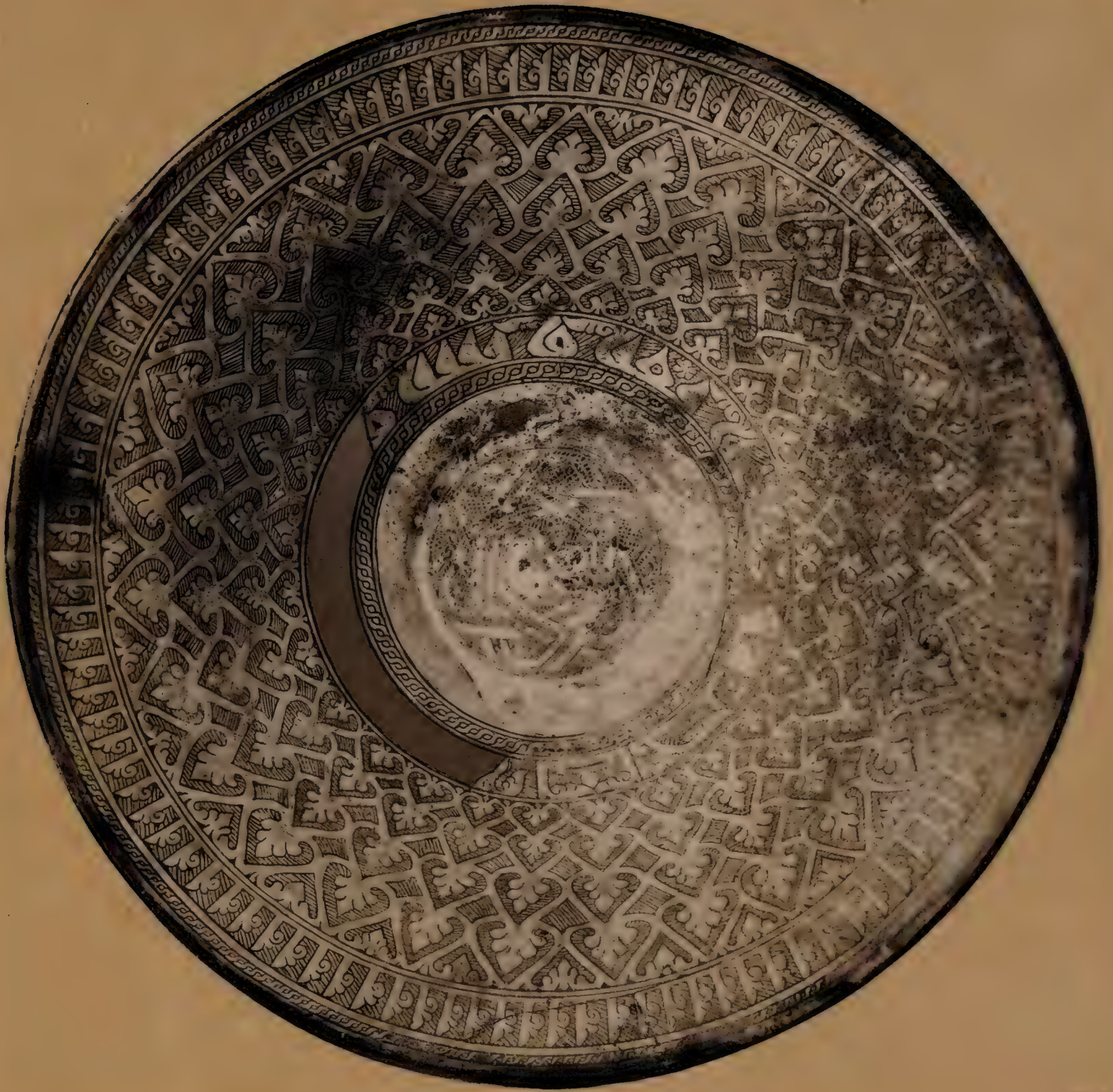




ST
MUSEUM
1900

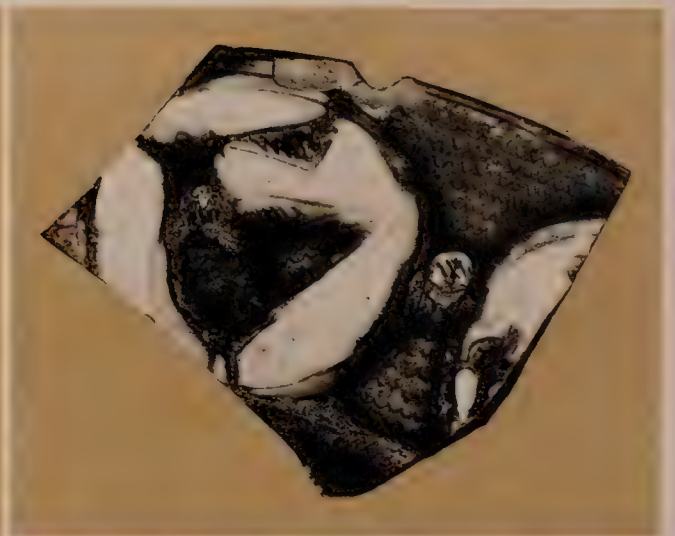
CA8.80.120.3.





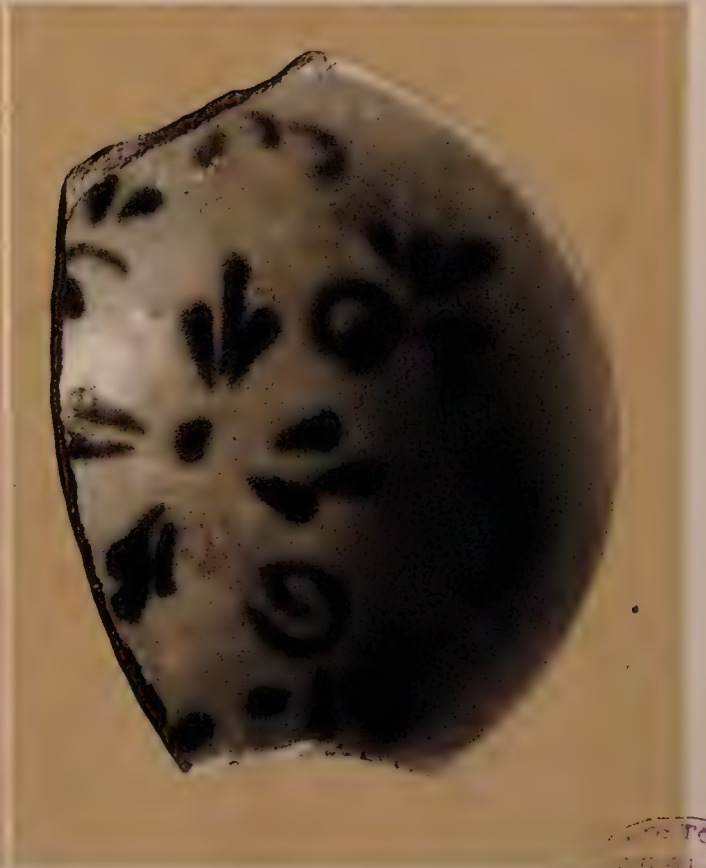








LIBRARY
MUSEUM
OF
THE
SMITHSONIAN INSTITUTION
WASHINGTON, D. C.



THE
MUSEUM
OF
ARTS
AND
CRAFTS



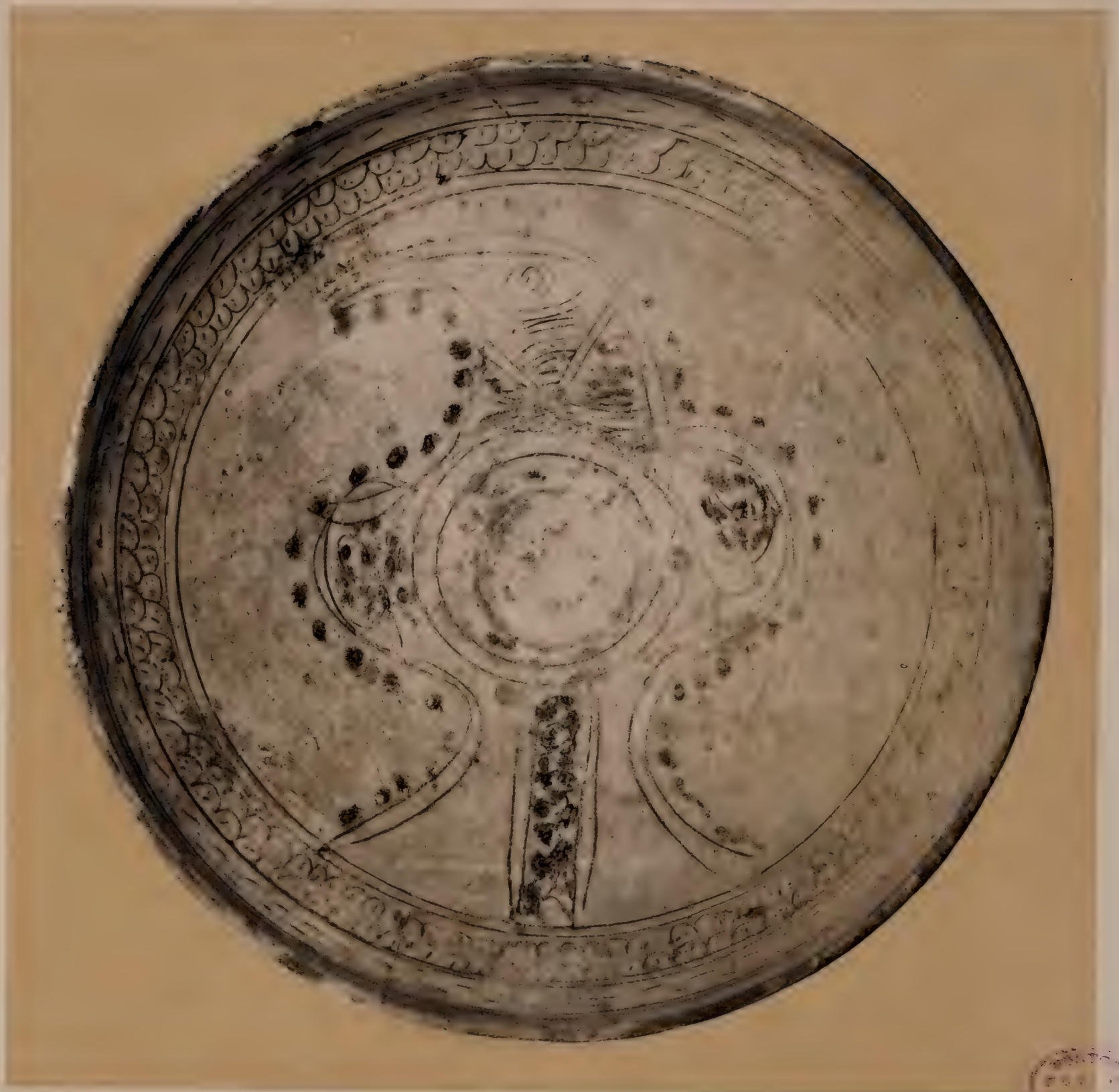
BOSTON
PUBLIC
LIBRARY



THE
MUSEUM
OF
ARTS
AND
SCIENCE



BOSTON
PUBLIC
LIBRARY





1880

28.90.180.9.





BOSTON
PUBLIC
LIBRARY





Small circular stamp or mark, possibly a library or collection mark, located in the bottom right corner of the page.



Small, faint, illegible text or stamp, possibly a collector's mark or a library stamp.



PLATE XLVI
FIG. 1

CAB. 90.180.9.







CAB. 90.180.9.



THE
MUSEUM
OF
ARTS
AND
CRAFTS





BRITISH MUSEUM



RESTAURATION
MUSEUM
1880







Small circular stamp or mark, possibly a library or collection identifier.

Calculus



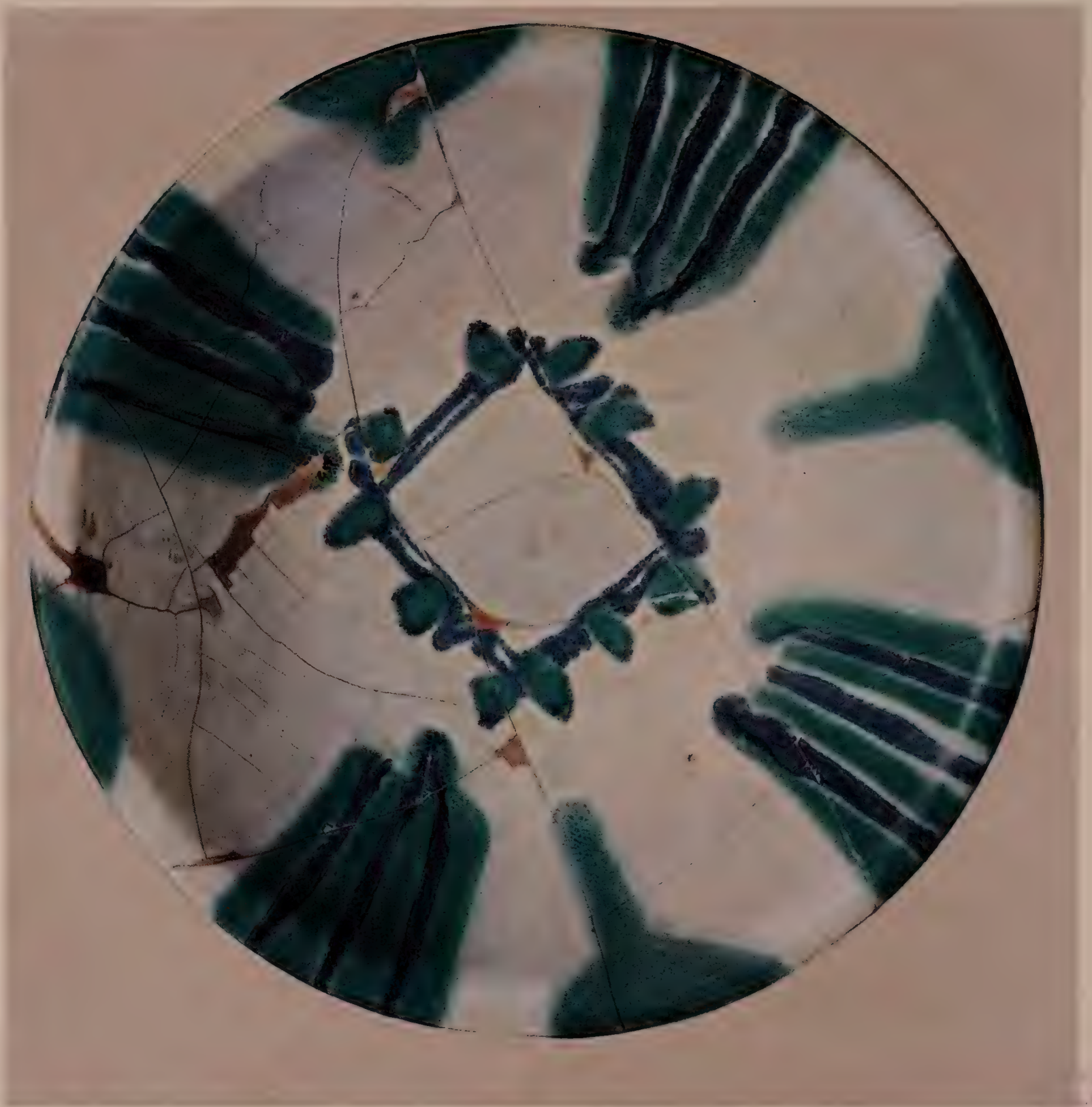
1895





110
110





111
111





Small circular stamp or mark, possibly a collector's or library's mark, located in the bottom right corner of the image area.



BRITISH MUSEUM





Small circular stamp or mark, possibly a library or collection identifier, located in the bottom right corner of the lower photograph.









Small, faint text or a stamp located at the bottom right of the page.



BRITISH MUSEUM



LIBRARY



LIBRARY



1917
MUSEUM







BRITISH MUSEUM

1890.10.10.3.



LIBRARY



LIBRARY



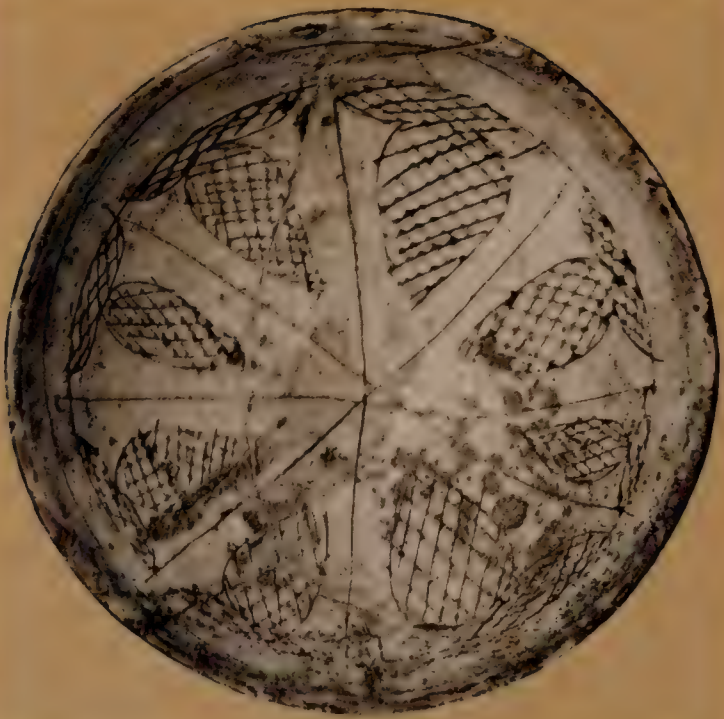
ASTORIA
PUBLIC
LIBRARY



LIBRARY

CAB. 80.130.9.





013.80.180.9.



ANTHROPOLOGICAL MUSEUM
SMITHSONIAN INSTITUTION
WASHINGTON, D. C.











CAB. 80.180.9.



CAR. 80.180.9.



CAS. 20.180.9.







BOSTON
PUBLIC
LIBRARY



12
12
12

48.50.180.9.



IST
JUL
1913





BOSTON
PUBLIC
LIBRARY





BOSTON
PUBLIC
LIBRARY





THE
PUBLIC
LIBRARY

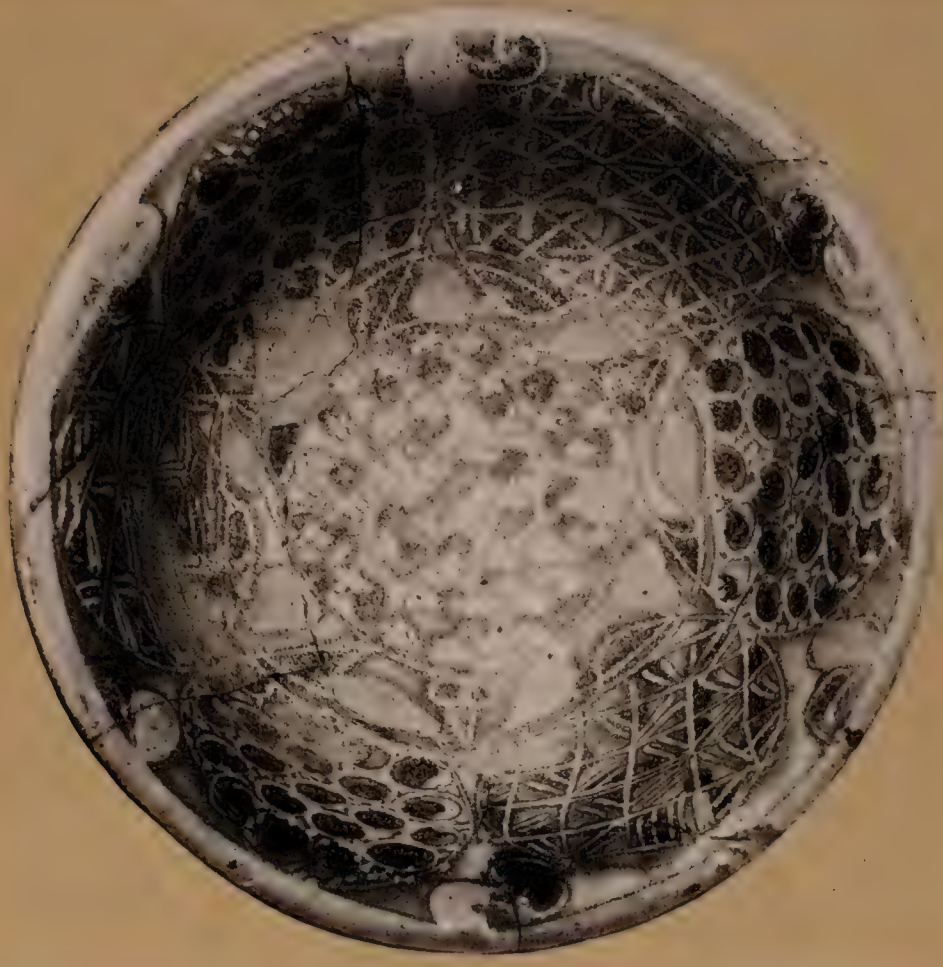


1857
PUBLIC
LIBRARY

180.9.

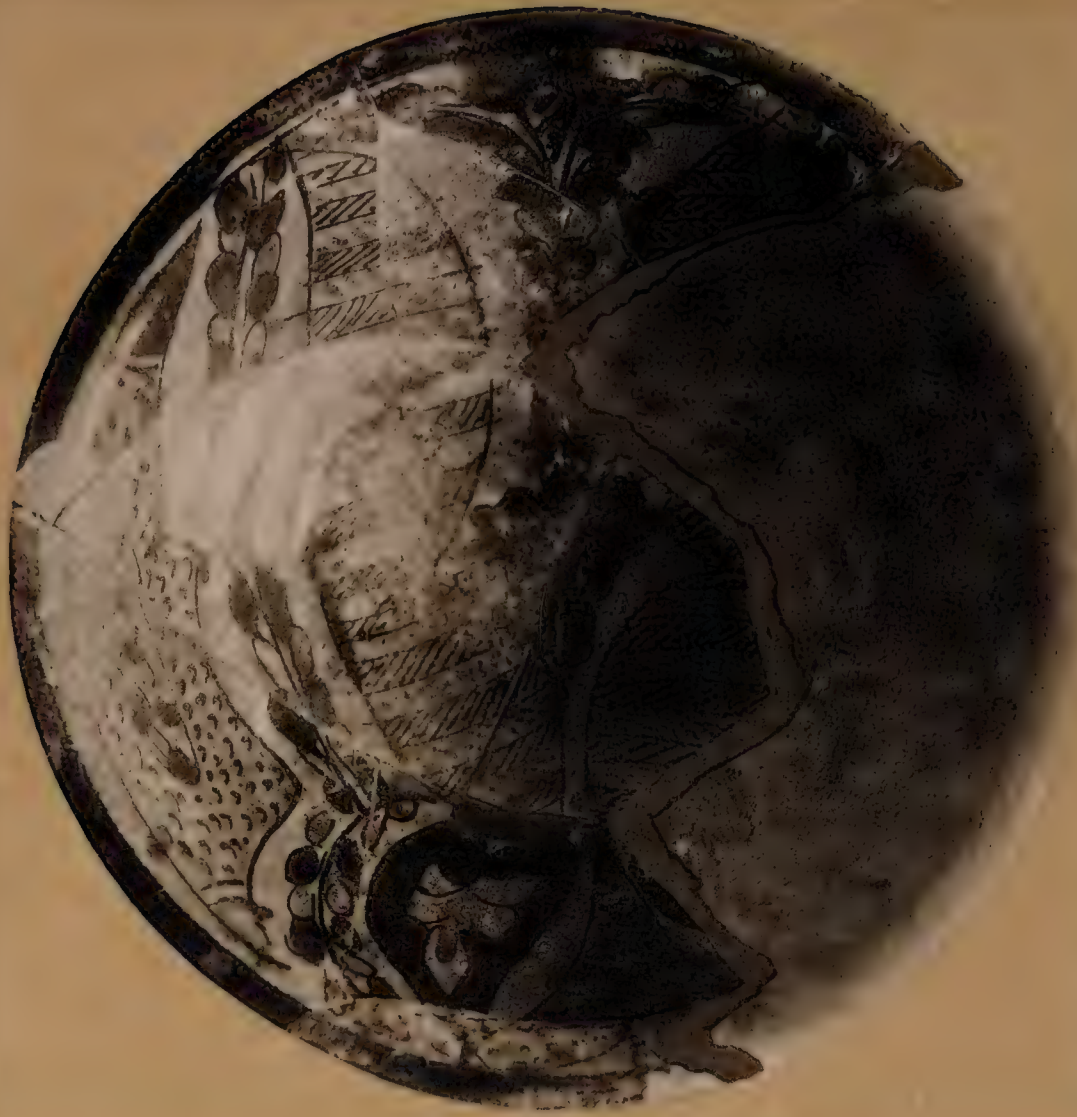


ASTORIA
PUBLIC
LIBRARY



1907
LIBRARY







BOSTON
PUBLIC
LIBRARY

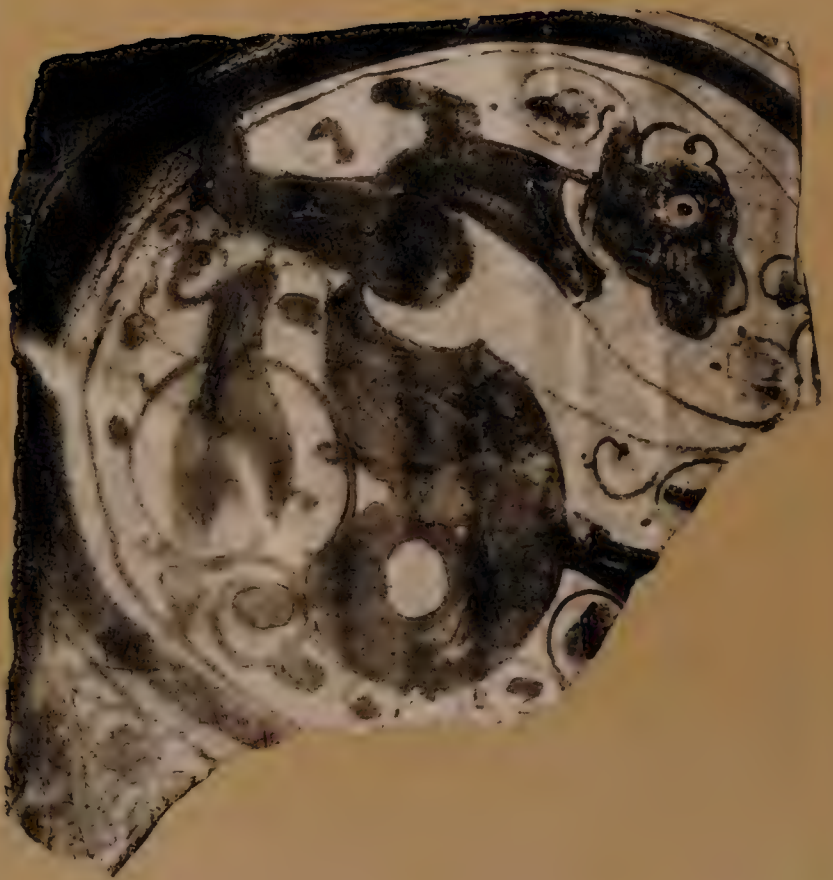


180.9.80.3



180.9.80 80



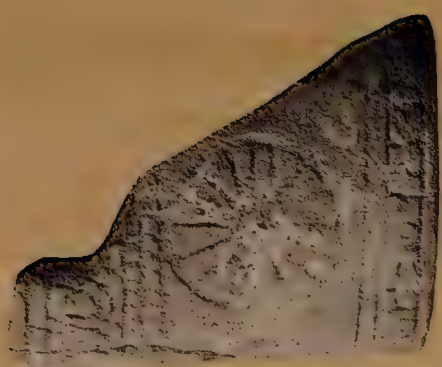






LIBRARY





100
100











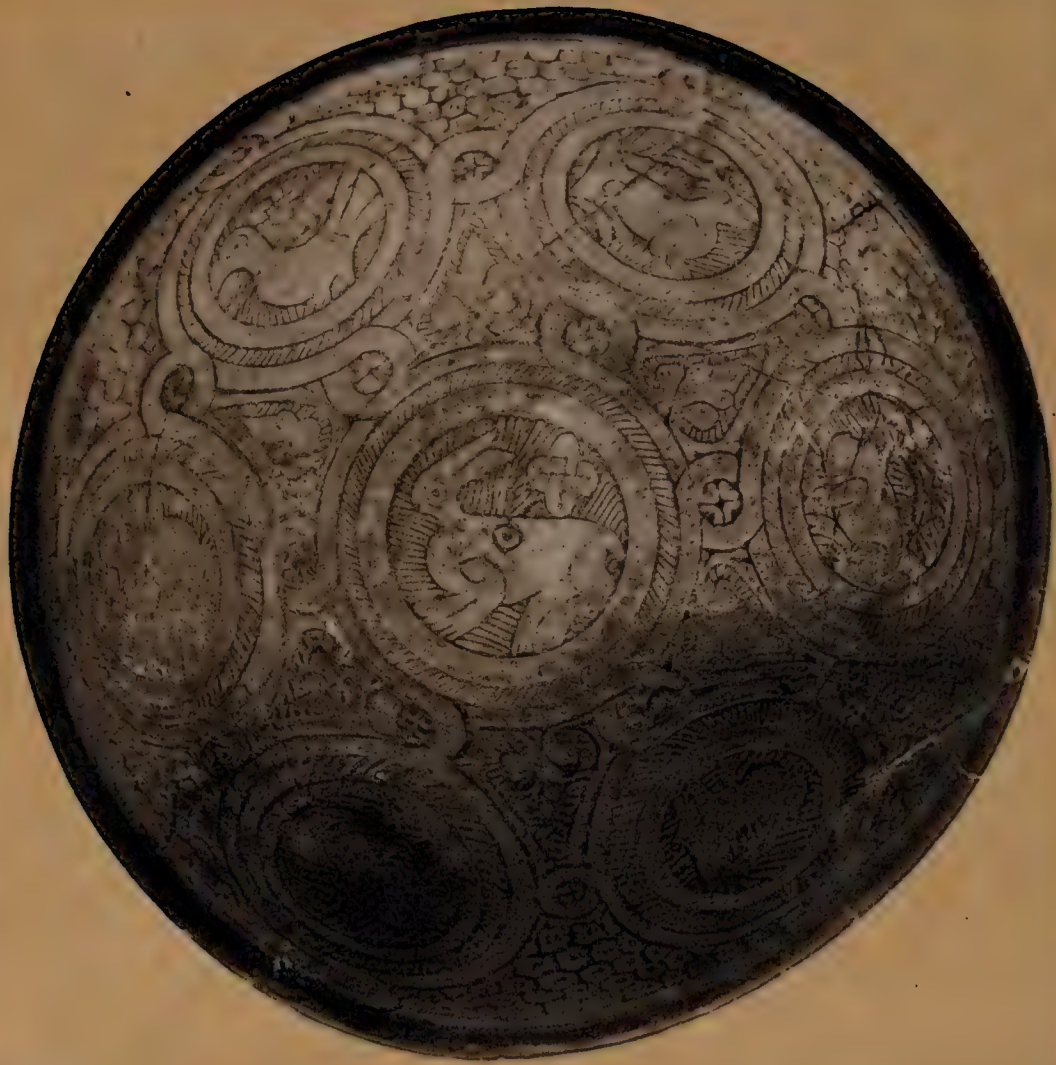




CLB.30.180.9.

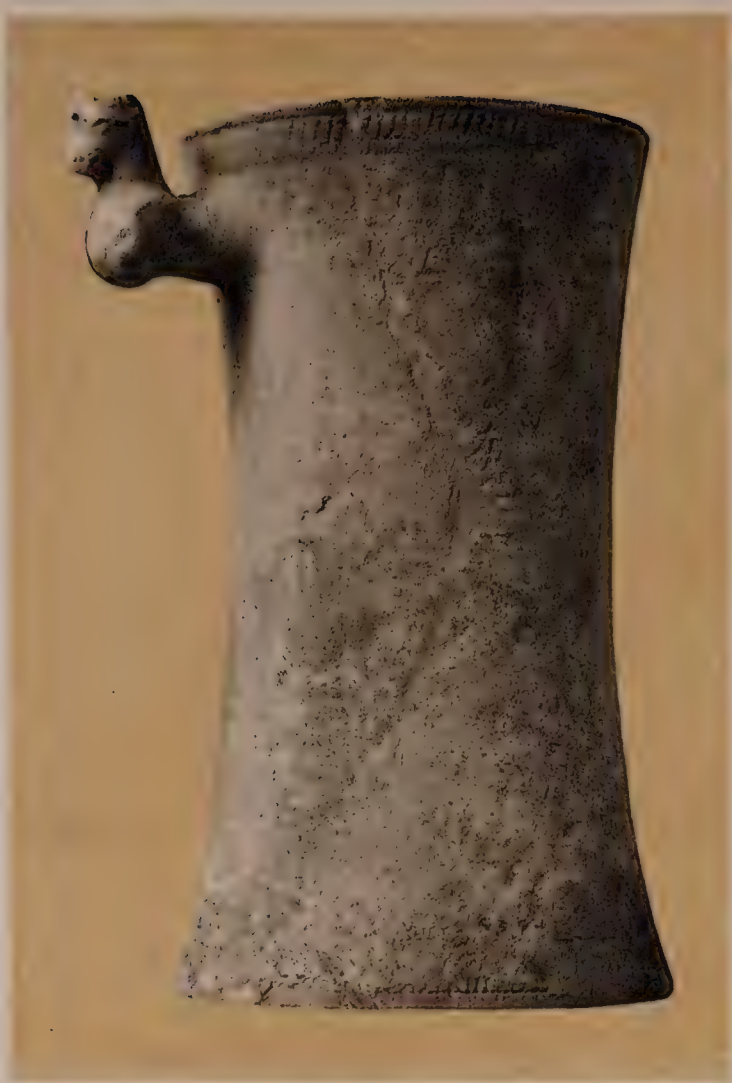


CLB.80.120.9.





CFB.80.130.9.



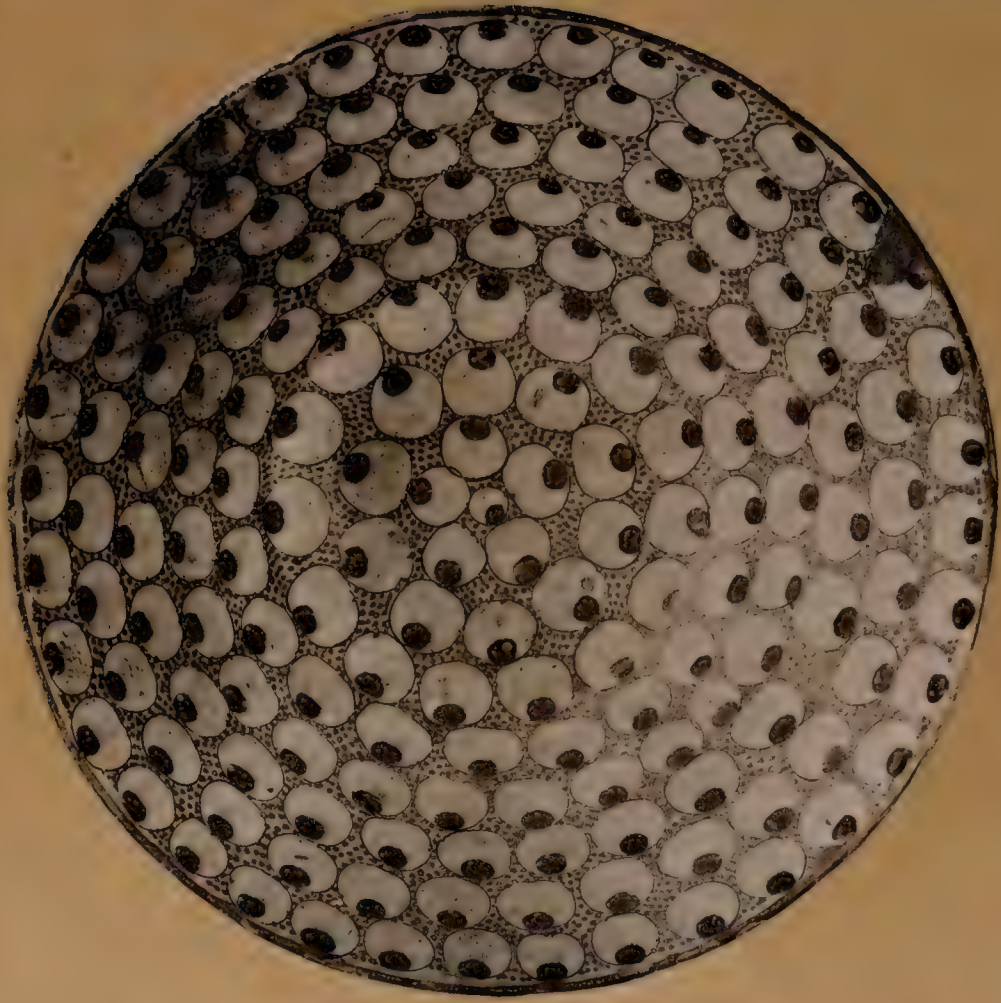


PLATE
LXXXVIII

A.B. 30.180.9.



LIBRARY





LIBRARY





AMERICAN
MUSEUM OF
NATURAL HISTORY



UNIVERSITY
OF TORONTO
LIBRARY



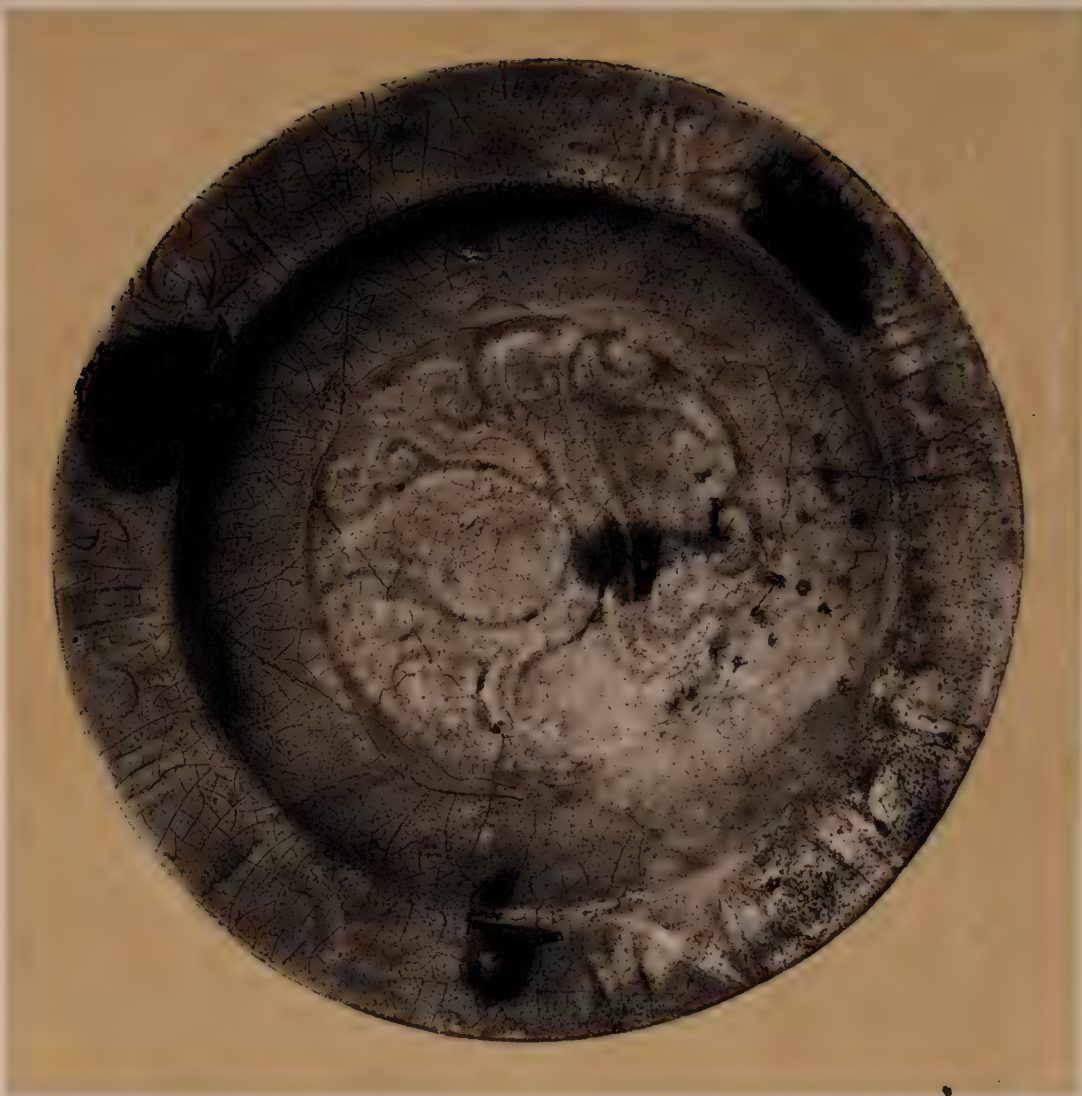
PUBLIC
LIBRARY



ST. P.
PUBLIC
LIBRARY



LIC
HARY



PUBLIC
LIBRARY



LIBRARY



BRITISH MUSEUM



LIC
LIBRARY







LIC
SHAHY







СЛВ-80.180.9.





Small, faint circular stamp or mark.



BRITISH
MUSEUM
LIBRARY







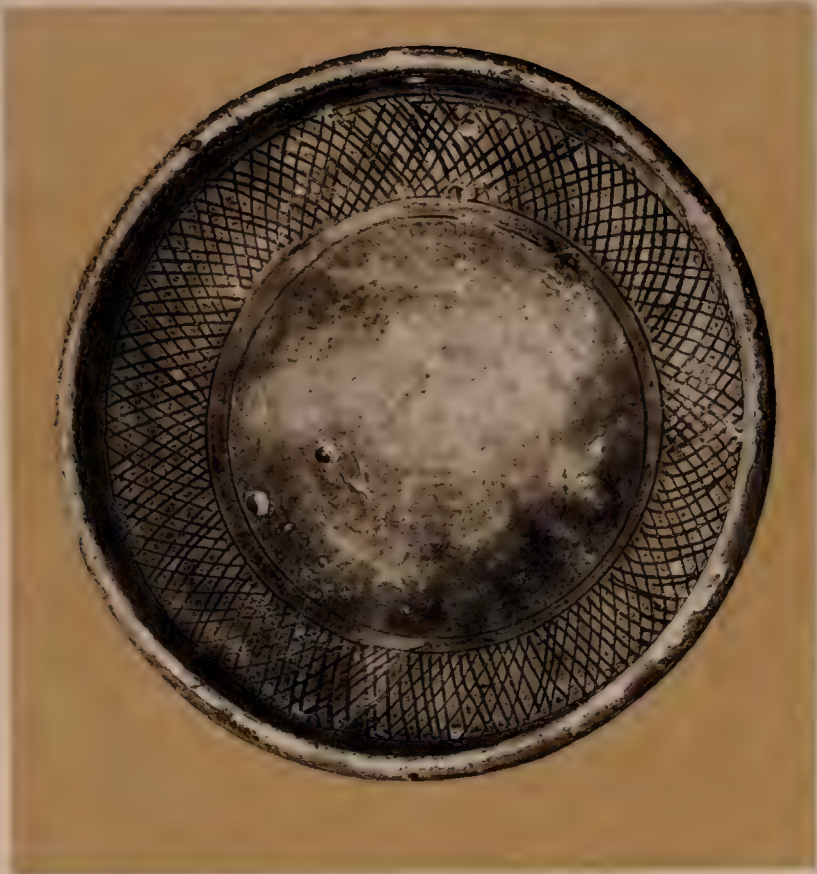
LB. 80.180.9.



B.30.180.9.



100
110





ASTORIA
MUSEUM
1910



ASTORIA
PUBLIC
MUSEUM

27.8.90 180.9.



ST. P. L. C.



110
LIBRARY



PUBLIC
LIBRARY



1000



C.S. 80.180.3.



